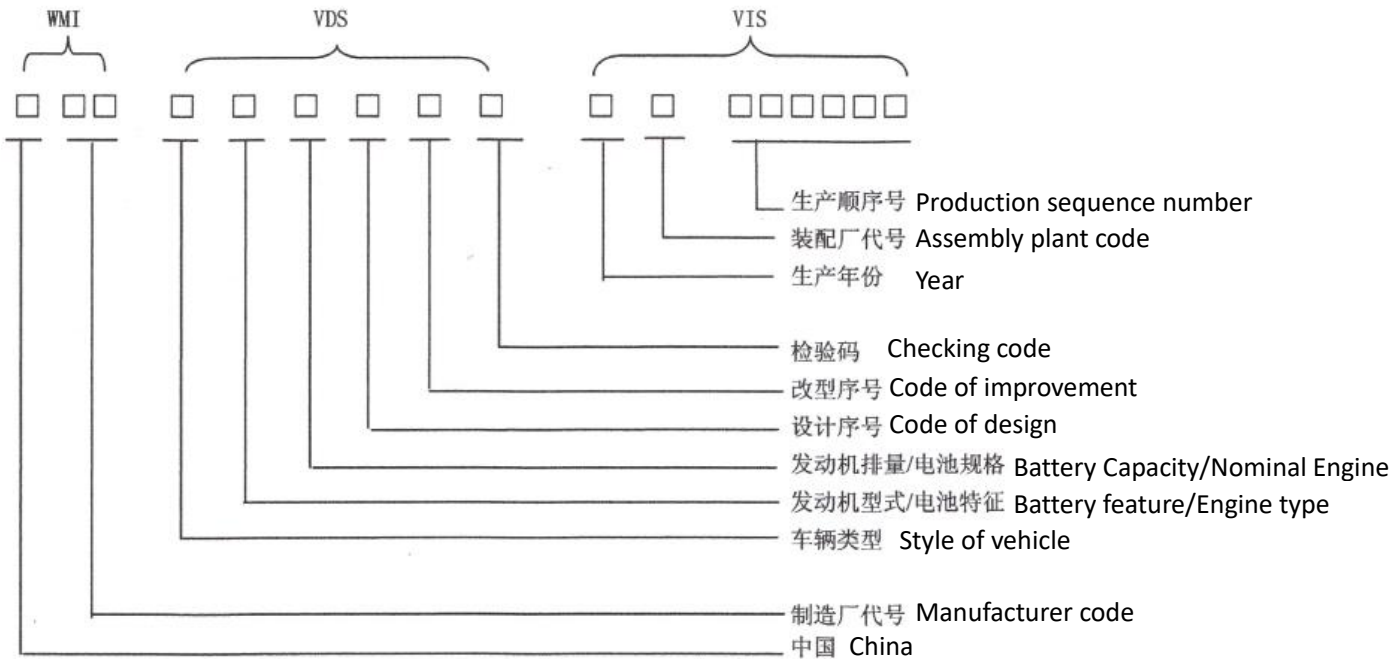


L	P	6														
1	2	3	4	5	6	7	8	9	10	11	12	13	14	15	16	17
Manufacturer			Style of vehicle	Battery feature/Engine type	Battery Capacity/Nominal Engine Displacement	Code of design	Code of improvement	Checking code	Year	Assembly plant code	Production sequence number					



1 The first part: World manufacturer identification number (WMI)

The 1st ~ 3rd digits— ( WMI )		
Code	Manufacturer	
LP6	GUANGZHOU PANYU HAOJIAN MOTORCYCLE INDUSTRY CO., LTD.	

2 The second part: Vehicle description ( VDS )

The 4th ~ 9th digits—VDS

VIN Position	Vehicle Attribute	Coding		
4	Style of vehicle	P= Normal two-wheeled motorcycle T= Two-wheeled scooter N= Normal two-wheeled moped B= Two-wheeled moped with footstep M= Electric two-wheeled moped D= Electric two-wheeled motorcycle C= Hybrid Power two-wheeled moped G= Special Two-wheeled motorcycle J= Two-wheeled off-road racing motorcycle R= Two-wheeled highroad & off-road motorcycle Y= Two-wheeled off-road motorcycle E= Hybrid power two-wheeled motorcycle F= Two-wheeled road racing motorcycle	Z= Normal tricycle H= Special tricycle W= Normal three-wheeled moped V= Special three-wheeled moped A= Electric three-wheeled moped K= Electric tricycle S= ATV	
5	Battery feature/Engine type	V= Lead-acid Battery W= Lithium Battery X= Nickel metal hybrid Battery Y= Fuel Battery Z= Nickel cadmium Battery A= Natural Air-cooled, Single Cylinder, Four-stroke Engine (Vertical type) C= Natural Air-cooled, Dual Cylinder, Four-stroke Engine (V-type) N= Natural Air-cooled, Single Cylinder, Four-stroke Engine (Horizontal type) P= Natural Air-cooled, Multiple Cylinder, Four-stroke Engine (Parallel in-line) D= Air-blast cooled, Single Cylinder, Four-stroke Engine (Horizontal type) G= Liquid-cooled, Single Cylinder, Four-stroke Engine (Vertical type) J= Oil-cooled, Single Cylinder, Four-stroke Engine (Vertical type) K= Oil-cooled, Single Cylinder, Four-stroke Engine (Horizontal type)		
6	Battery Capacity/Nominal Engine Displacement	A= 48V12AH/<50CC B= 48V20AH/50CC C= 48V24AH/60CC D= 48V30AH/70CC E= 48V40AH/80CC F= 60V12AH/90CC G= 60V20AH/100CC H= 60V28AH/110CC	X= 60V30AH/125CC J= 60V32AH/150CC K= 60V40AH/175CC L= 64V14AH/200CC M= 64V16AH/250CC N= 64V20AH/300CC P= 72V20AH/350CC Y= 72V30AH/400CC	R= 72V40AH/500CC S= 72V50AH/600CC T= 80V14AH/650CC U= 80V16AH/700CC V= 80V20AH/750CC W= > 800CC
7	Code of design	1= First design 2= Second design 3= Third design 4= Fourth design 5= Fifth design 6= Sixth design 7= Seventh design 8= Eighth design 9= Ninth design A= Tenth design	C= 12 <sup>th</sup> design D= 13 <sup>th</sup> design E= 14 <sup>th</sup> design F= 15 <sup>th</sup> design G= 16 <sup>th</sup> design H= 17 <sup>th</sup> design J= 18 <sup>th</sup> design K= 19 <sup>th</sup> design L= 20 <sup>th</sup> design M= 21 <sup>st</sup> design	P= 23 <sup>rd</sup> design R= 24 <sup>th</sup> design S= 25 <sup>th</sup> design T= 26 <sup>th</sup> design U= 27 <sup>th</sup> design V= 28 <sup>th</sup> design W= 29 <sup>th</sup> design X= 30 <sup>th</sup> design Y= 31 <sup>st</sup> design Z= 32 <sup>nd</sup> design

		B= Eleventh design	N= 22 <sup>nd</sup> design	
8	Code of improvement	Z= First improvement A= Second improvement B= Third improvement C= Fourth improvement D= Fifth improvement E= Sixth improvement F= Seventh improvement G= Eighth improvement	H= 9 <sup>th</sup> improvement J= 10 <sup>th</sup> improvement K= 11 <sup>th</sup> improvement L= 12 <sup>th</sup> improvement M= 13 <sup>th</sup> improvement N= 14 <sup>th</sup> improvement P=15 <sup>th</sup> improvement R=16 <sup>th</sup> improvement	S= 17 <sup>th</sup> improvement T= 18 <sup>th</sup> improvement U= 19 <sup>th</sup> improvement V= 20 <sup>th</sup> improvement W= 21 <sup>st</sup> improvement X= 22 <sup>nd</sup> improvement Y= 23 <sup>rd</sup> improvement
9	Checking code			

### 3 The third part : Indicating part of vehicle ( VIS )

The 10th ~ 17th digits—VIS

The 10th digits—Year

Year	Code	Year	Code	Year	Code	Year	Code
2014	E	2017	H	2020	L	2023	P
2015	F	2018	J	2021	M	2014	R
2016	G	2019	K	2022	N	2025	S

The 11th digits—Manufacturer , GUANGZHOU PANYU HAOJIAN MOTORCYCLE INDUSTRY CO., LTD. = "0"

The 12th ~ 17th digits——Production sequence number