



**Desi Ujkashevic, Global Director**  
Automotive Safety Office  
Sustainability, Environment & Safety Engineering

**Fairlane Plaza South, Suite 400**  
330 Town Center Drive  
Dearborn, MI 48126-2738

March 20, 2020

James Owens  
Administrator  
National Highway Traffic Safety Administration  
1200 New Jersey Avenue, SE/W42-308  
Washington, DC 20590

Attention: VIN Coordinator

Dear Mr. Owens

Subject: 2021 Model Year Vehicle Identification Number Codes – Revision 2

Reference: Ford Motor Company's October 22, 2019 Letter Concerning 2021 Model Year Vehicle Identification Number Codes – Initial Submission

Pursuant to the requirements set forth in Part 565 of Title 49 of the Code of Federal Regulations, Vehicle Identification Number (VIN) Requirements, Ford Motor Company (Ford) is submitting 2021 model year VIN code information for the vehicles identified in the attached table of contents. Ford is also including copies of all previously submitted 2021 model year VIN information not affected by this update. This package supersedes the January 27, 2020 submission revision the Ford Mustang Mach-E and Lincoln Navigator, and adding the Ford GT, Ford Mustang, Ford Bronco Sport, Ford Escape, Ford Super Duty 250, 350, 450, 550, and Ford Motorhome-Stripped Chassis vehicles.

If there are any questions regarding this matter, please contact me.

Sincerely,

A handwritten signature in black ink, appearing to read "Desi Ujkashevic".

Desi Ujkashevic

Attachment

# 2021 Table Of Contents

Attachment  
March 20, 2020

<b>SUBJECT</b>	<b>PAGE</b>
World Manufacturer Identifier	2
Restraints & Brakes	3
Check Digit & Model Year	4
Assembly Plant & Serialization	5
Generic Passenger Car Format	6
Ford GT	7
Ford Mustang	8
Generic Truck, Bus, MPV Format	9
Ford Bronco Sport	10
Ford Econoline	11
Ford EcoSport	12
Ford Escape	13
Ford Expedition	14
Ford Explorer	15
Ford F-150	16
Ford Motorhome-Stripped Chassis	17
Ford Mustang Mach-E	18
Ford Super Duty F-250 and F-350	19
Ford Super Duty F-450, F-550 and F600	20
Ford Super Duty F-650/750	21
Ford Transit Connect	22
Lincoln Aviator	23
Lincoln Corsair	24
Lincoln Navigator	25

**World Manufacturer Identifier  
(VIN Positions 1, 2, and 3)**

<b>Code</b>	<b>Manufacturer</b>	<b>Type</b>
<b>Passenger Cars</b>		
1FA	Ford Motor Company, USA	Passenger Car
1LN	Ford Motor Company, USA	Passenger Car
2LN	Ford Motor Company, Canada	Passenger Car
3FA	Ford Motor Company, Mexico	Passenger Car
3LN	Ford Motor Company, Mexico	Passenger Car
WF0	Ford Motor Company, Germany	Passenger Car
LVS	Ford Motor Company, China	Passenger Car
<b>Generic Truck, Bus, MPV Format</b>		
1FB	Ford Motor Company, USA	Bus
1FM	Ford Motor Company, USA	Multipurpose Passenger Vehicle
1FT	Ford Motor Company, USA	Truck - Completed Vehicle
2FM	Ford Motor Company of Canada, Ltd.	Multipurpose Passenger Vehicle
2LM	Ford Motor Company of Canada, Ltd.	Multipurpose Passenger Vehicle
5LM	Ford Motor Company, USA	Multipurpose Passenger Vehicle
MAJ	Ford Motor Company, India	Multipurpose Passenger Vehicle
NM0	Ford Motor Company, Europe	Truck - Completed Vehicle
<b>Incomplete Vehicles</b>		
1FC	Ford Motor Company, USA	Basic (Stripped) Chassis
1F6	Detroit Chassis LLC, USA	Basic (Stripped) Chassis
2L1	Ford Motor Company of Canada, Ltd.	Incomplete Vehicle - Limousine
2LJ	Ford Motor Company of Canada, Ltd.	Incomplete Vehicle - Hearse
1FD	Ford Motor Company, USA	Incomplete Vehicle
5LD	Ford Motor Company, USA	Incomplete Vehicle - Limousine

# 2021 Restraints & Brakes

Attachment  
October 22, 2019

## Restraint, Brake System and GVWR Class (VIN Position 4)

Vehicle Type	Brake System	GVWR Class **	GVWR Range	Restraint Category																
				1	2	3	4	5	6	7	8	9	10	11	12	13	14	15	16	17
Passenger Car	-	-	-	K		F	B	H		6	D	U	5			T		G		
MPV, Truck	Hydraulic	Class A:	Less than 3,000 pounds																	
Generic Passenger Car Format	Hydraulic	Class B:	3,001-4,000 pounds							3										
MPV, Truck	Hydraulic	Class C:	4,001-5,000 pounds			Y	K	A		6	C				7					
MPV, Truck	Hydraulic	Class D:	5,001-6,000 pounds			Z	L	D	G	P	T	U	S		8					
MPV, Truck	Hydraulic	Class E:	6,001-7,000 pounds		R	6	M	E	H		F		5	2						
MPV, Truck	Hydraulic	Class F:	7,001-8,000 pounds	B	V	R	N	F	J		H		Y						W	
MPV, Truck	Hydraulic	Class G:	8,001-9,000 pounds				P	V												
Truck, Bus	Hydraulic	Class G:	8,501-9,000 pounds	H	C	N	Y		Z								K		1	
Truck, Bus	Hydraulic	Class H:	9,001-10,000 pounds	J	D	S	B	7	A								L		2	
Truck, Bus	Hydraulic	Class 3:	10,001-14,000 pounds	K	E	W	R	8	V								M		3	
Truck, Bus	Hydraulic	Class 4:	14,001-16,000 pounds	L	F	X	T	9											4	
Truck, Bus	Hydraulic	Class 5:	16,001-19,500 pounds	M	G	A	U	0											5	
Truck, Bus	Hydraulic	Class 6:	19,501-26,000 pounds	N															6	
Truck, Bus	Hydraulic	Class 7:	26,001-33,000 pounds	P																
Truck, Bus	Air	Class 6:	19,501-26,000 pounds	W																
Truck, Bus	Air	Class 7:	26,001-33,000 pounds	X																
Truck, Bus	Air	Class 8:	33,001-55,000 pounds	Y																

**\*\* Brake System (only) for Buses and Incomplete Vehicles -- GVWR Class as shown are not applicable**

Restraint Category	Restraint Devices and Location
1	Manual Belts WITHOUT Air Bags
2	Manual Belts with Driver Frontal Air Bag ONLY
3	Manual Belts with Driver and Passenger Frontal Air Bags
4	Manual Belts with Driver and Passenger Frontal Air Bags and Side Inflatable Restraint (1st row)
5	Manual Belts with Driver and Passenger Frontal Air Bags and Side Inflatable Restraint (1st & 2nd Row)
6	Manual Belts with Driver and Passenger Frontal Air Bags and Side Inflatable Restraint (1st, 2nd, 3rd Row & add'l rows)
7	Manual Belts with Driver and Passenger Frontal Air Bags and Side Inflatable Restraint (1st & 2nd Row) and Driver/Passenger Knee Restraints
8	Manual Belts with Driver and Passenger Frontal Air Bags and Side Inflatable Restraint (1st & 2nd Row) and Driver Knee Restraint
9	Manual belts with Driver and Passenger Frontal Air Bags and Side Inflatable Restraint (1st, 2nd, & 3rd Row) and Driver Knee Restraint
10	Manual belts with Driver and Passenger Frontal Air Bags and Side Inflatable Restraint (1st, 2nd, & 3rd Row) and Passenger Knee Restraint
11	Manual belts with Driver and Passenger Frontal Air Bags and Side Inflatable Restraint (1st, 2nd, & 3rd Row) and Passenger Knee Restraint (used for Europe/Russia Explorer only)
12	Manual Belts with Driver Only Frontal Air Bags and Driver Only Side Inflatable Restraint (1st row)
13	Manual Belts with Driver and Passenger Frontal Air Bags and Side Inflatable Restraint (1st Row) and Driver/Passenger Knee Restraint
14	Manual belts with driver only frontal air bags and driver/passenger side inflatable restraint (1st row)
15	Manual Belts with Driver and Passenger Frontal Air Bags and Side Inflatable Restraint (1st Row) and Driver/Passenger Knee Restraints
16	Manual Belts with Driver and Passenger Frontal Air Bags and Driver Knee Restraint
17	No restraints

# 2021 Check Digit & Model Year

Attachment  
October 22, 2019

## Check Digit (VIN Position 9)

See Paragraph 565.15 of Part 565.  
The check digit must have a value of 0, 1, 2, 3, 4, 5, 6, 7, 8, 9, or X.

## Vehicle Model Year (VIN Position 10)

<u>VIN Code</u>	<u>YEAR</u>	<u>VIN CODE</u>	<u>YEAR</u>
4	2004	N	2022
5	2005	P	2023
6	2006	R	2024
7	2007	S	2025
8	2008	T	2026
9	2009	V	2027
A	2010	W	2028
B	2011	X	2029
C	2012	Y	2030
D	2013	1	2031
E	2014	2	2032
F	2015	3	2033
G	2016	4	2034
H	2017	5	2035
J	2018	6	2036
K	2019	7	2037
L	2020	8	2038
<b>M</b>	<b>2021</b>	9	2039

**Vehicle Assembly Plant  
(VIN Position 11)**

CODE	Vehicle Assembly Plant Name: Location
B	Oakville: Oakville, Ontario
C	Chennai Assembly Plant, India
D	Ohio Assembly: Avon Lake, Ohio
E	Kentucky Truck: Louisville, Kentucky
F	Dearborn: Dearborn, Michigan
G	Chicago: Chicago, Illinois
H	Multimatic, Ontario, Canada
K	Kansas City; Claycomo, Missouri
L	Michigan Assembly: Wayne, Michigan
M	Cuautitlan: Cuautitlan, Mexico
N	Chicago SHO Center, Chicago, Illinois
R	Hermosillo: Hermosillo, Mexico
0	Detroit Empowerment Zone: Detroit, MI
5	Flat Rock Assembly Plant (AAI): Flat Rock, MI
1	Valencia Assembly Plant; Valencia, Spain
U	Louisville Assembly Plant: Louisville, Kentucky
4	Saarlouis Assembly Plant; Saarlouis, Germany

\* Detroit Chassis LLC and MSX International

**Sequential Vehicle Identifier  
(VIN Positions 12 through 17)**

**Passenger Cars:**

A unique six digit numeric sequence code is assigned to each passenger car by the vehicle assembly plant of manufacture.

100001 thru 599999 - Ford Division Vehicles  
600001 thru 999999 - Lincoln Division Vehicles

**Trucks, MPVs, Buses and Incomplete Vehicles:**

A unique six digit alphanumeric sequence code is assigned for trucks, buses, MPV's, and related incomplete vehicles.

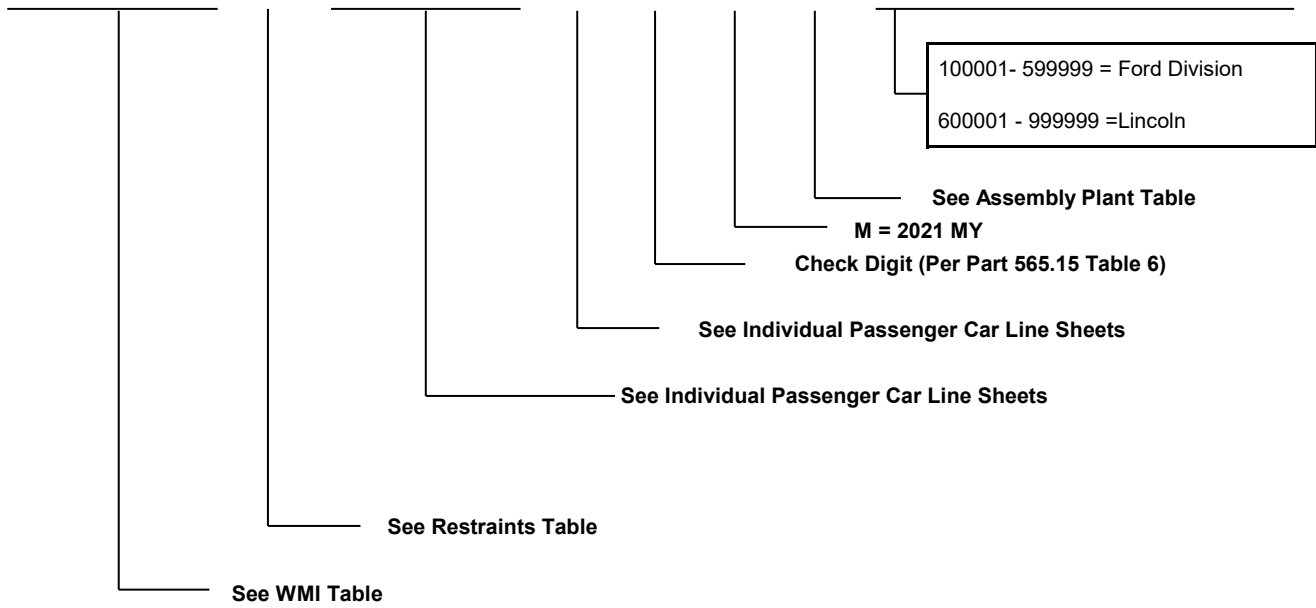
A00001 thru F99999 - Ford Division Vehicles (except Transit Connect & EcoSport)  
J00001 thru L99999 - Lincoln Division Vehicles  
000001 thru 999999 - Ford Transit Connect & EcoSport

# 2021 Generic Passenger Car Format

Attachment  
October 22, 2019

World Manufacturer Identifier (WMI)			Restraint System Category	Make, Car Line, Series, Body Type			Engine Type - Displacement, Cylinders, Fuel Type Manufacturer and Horsepower	VIN Check Digit (0-9 or X)	Vehicle Model Year	Plant of Manufacture	Numerical Sequence Vehicle Identifier					
1	2	3	4	5	6	7	8	9	10	11	12	13	14	15	16	17

?	?	?	?	?	?	?	?	?	M	?	?	?	?	?	?	?
---	---	---	---	---	---	---	---	---	---	---	---	---	---	---	---	---



# 2021 Ford GT

World Manufacturer Identifier (WMI)			Restraint System Category	Make, Car Line, Series, Body Type			Engine Type - Displacement, Cylinders, Fuel Type, Manufacturer, and Horsepower	VIN Check Digit (0-9 or X)	Vehicle Model Year	Plant of Manufacture	Numerical Sequence Vehicle Identifier					
1	2	3	4	5	6	7	8	9	10	11	12	13	14	15	16	17

**2 F A G P 9 ? W ? M H ? ? ? ? ? ?**

**Sequential Vehicle Identifier**  
100,001 - 599,999

**Vehicle Assembly Plant**  
Multimatic, Ontario CA

**Model Year**  
2021

**Check Digit (Per Part 565.6(c))**

Displacement (L) / Cyl	Fuel	Mfg	Net Brake H.P.
3.5L GTDI / V6	Gasoline	Ford	647

Make	Line	Series	Body Type
Ford	GT	RWD	2-Dr
Ford	GT	RWD	2-Dr
Ford	GT	RWD	2-Dr
Ford	GT	RWD	2-Dr

Restraint Category							
Manual Belts	Driver Frontal	Pass. Frontal	Side Inflatable			Driver Knee	Pass Knee
			1st Row	2nd Row	3rd Row		
X	X	X	X			X	X

**W =**

**P9C =** Ford GT RWD 2-Dr

**P9D =** Ford GT RWD 2-Dr

**P9E =** Ford GT RWD 2-Dr

**P9F =** Ford GT RWD 2-Dr

**G =**

Manufacturer	Make	Type
Ford Motor Company, Canada LTD	Ford	Passenger Car

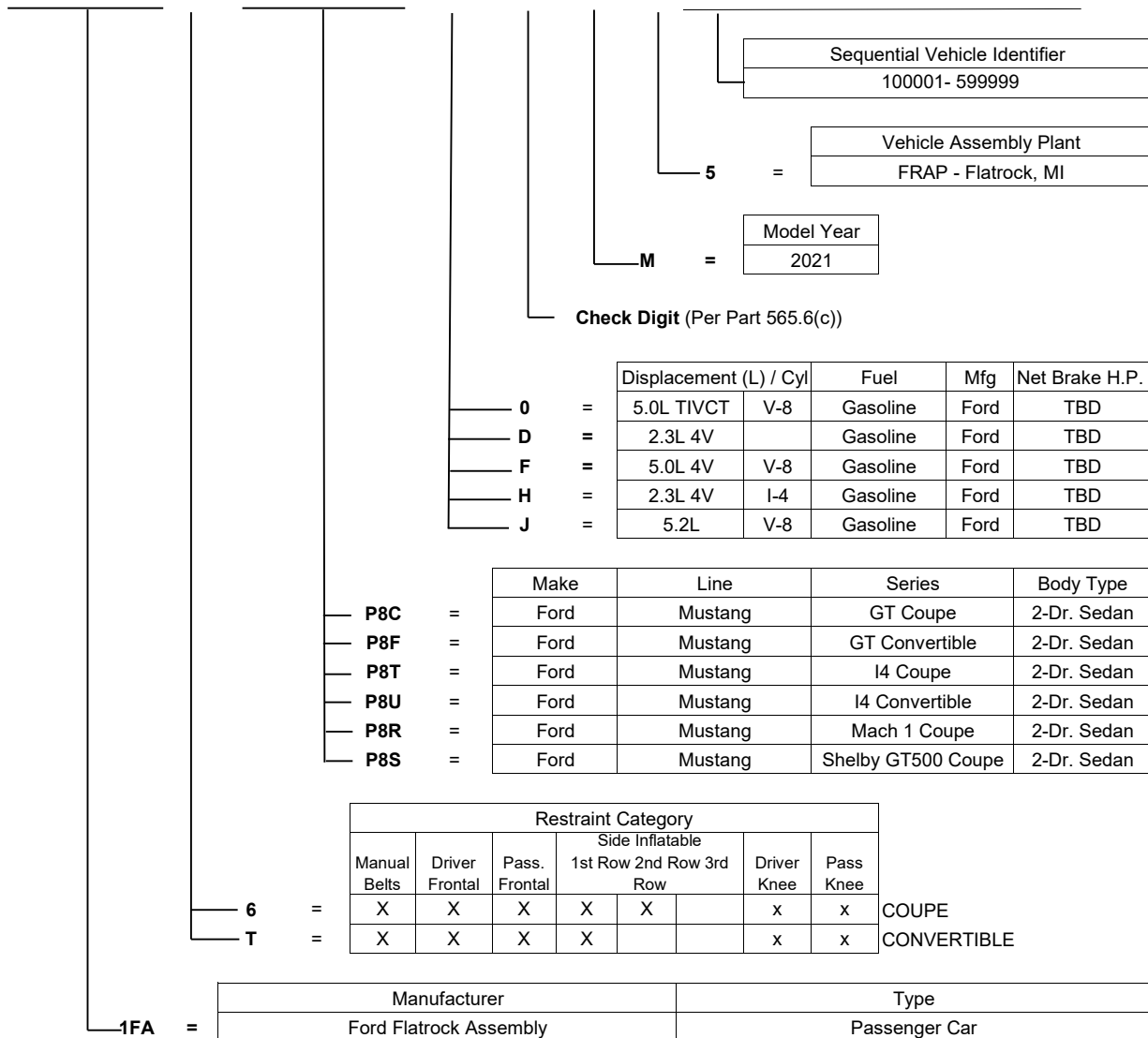


# 2021 Ford Mustang

Attachment  
March 20, 2020

World Manufacturer Identifier (WMI)			Restraint System Category	Make, Car Line, Series, Body Type			Engine Type - Displacement, Cylinders, Fuel Type, Manufacturer, and Horsepower	VIN Check Digit (0-9 or X)	Vehicle Model Year	Plant of Manufacture	Numerical Sequence Vehicle Identifier					
1	2	3	4	5	6	7	8	9	10	11	12	13	14	15	16	17

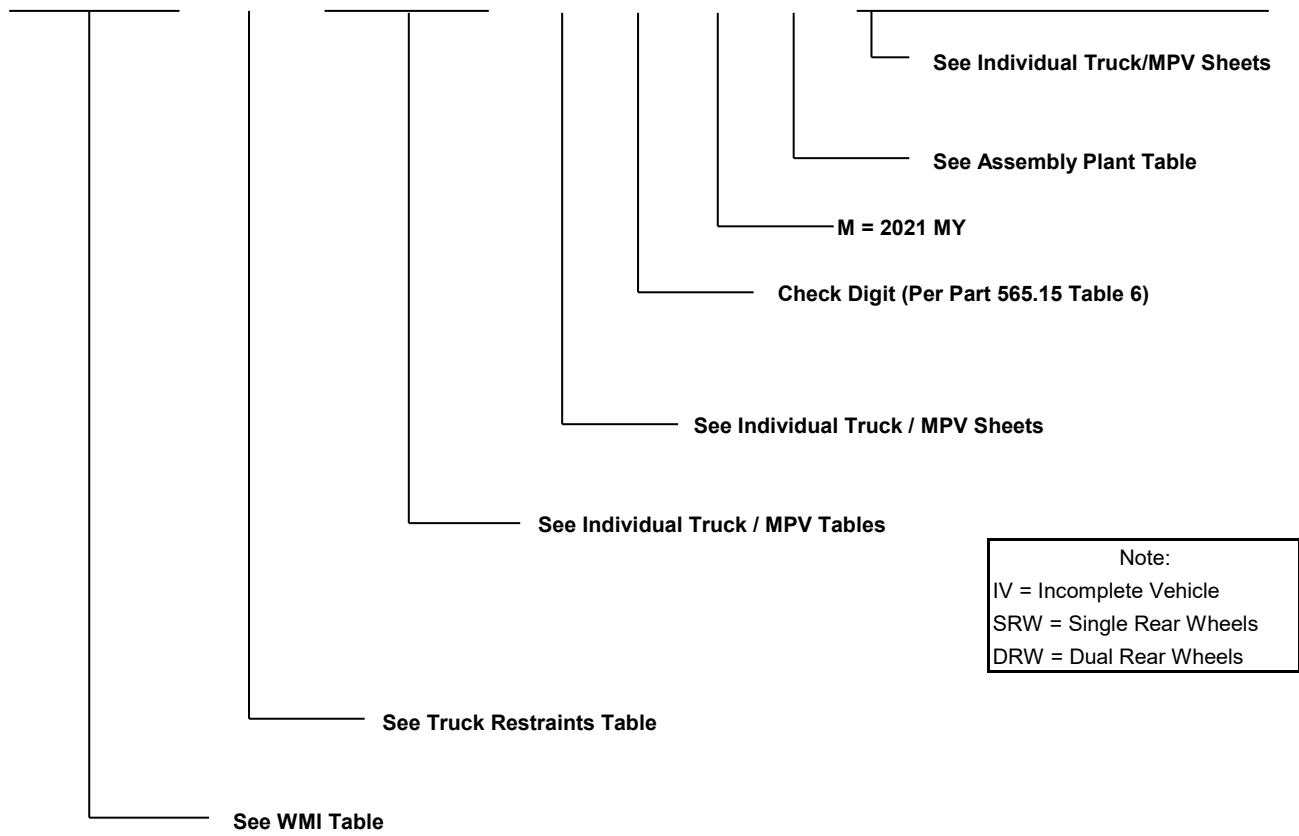
1	F	A	?	P	8	?	?	?	M	5	?	?	?	?	?	?
---	---	---	---	---	---	---	---	---	---	---	---	---	---	---	---	---



# 2021 Generic Truck, Bus, MPV Format

Attachment  
October 22, 2019

World Manufacturer Identifier (WMI)			Brake System / GVWR / Restraint System Category	Make, Line, Series, Chassis Type, Cab or Body Type, Vehicle Type			Engine Type - Displacement, Cylinders, Fuel Type Manufacturer and Horsepower	VIN Check Digit (0-9 or X)	Vehicle Model Year	Plant of Manufacture	Alphanumeric Sequence Vehicle Identifier					
1	2	3	4	5	6	7	8	9	10	11	12	13	14	15	16	17
?	?	?	?	?	?	?	?	?	M	?	?	?	?	?	?	?



<p>Note: IV = Incomplete Vehicle SRW = Single Rear Wheels DRW = Dual Rear Wheels</p>
--

# 2021 Ford Bronco Sport

Attachment  
March 20, 2020

World Manufacturer Identifier (WMI)			Restraint System Category	Make, Car Line, Series, Body Type			Engine Type - Displacement, Cylinders, Fuel Type, Manufacturer, and Horsepower	VIN Check Digit (0-9 or X)	Vehicle Model Year	Plant of Manufacture	Numerical Sequence Vehicle Identifier					
1	2	3	4	5	6	7	8	9	10	11	12	13	14	15	16	17

3 F M C R 9 ? ? ? M R ? ? ? ? ? ?

**3FM** =

**C** =

**R** =

**M** =

**6** =

**9** =

**R9A** =

**R9B** =

**R9C** =

**R9D** =

**R9F** =

Sequential Vehicle Identifier  
A00001 - F99999

Vehicle Assembly Plant  
Hermosillo: Hermosillo, Mexico

Model Year  
2021

**Check Digit** (Per Part 565.6(c))

	Displacement (L) / Cyl	Fuel	Mfg	Net Brake H.P.
<b>6</b>	1.5L DRAGON I3	Gasoline	Ford	tbd
<b>9</b>	2.0L GTDI I4	Gasoline	Ford	tbd

	Make	Line	Series	CAB	VEH
<b>R9A</b>	Ford	BRONCO SPORT	BASE	4X4	MPV
<b>R9B</b>	Ford	BRONCO SPORT	BIG BEND	4X4	MPV
<b>R9C</b>	Ford	BRONCO SPORT	OUTER BANKS	4X4	MPV
<b>R9D</b>	Ford	BRONCO SPORT	BADLANDS	4X4	MPV
<b>R9F</b>	Ford	BRONCO SPORT	FIRST EDITION	4X4	MPV

Restraint Category						
Manual Belts	Driver Frontal	Pass. Frontal	Side Inflatable			Driver Knee
			1st Row	2nd Row	3rd Row	
X	X	X	X	X		X

Manufacturer	Type
Ford Motor Company, Mexico	MPV

# 2021 Ford Econoline

Attachment  
October 22, 2021

World Manufacturer Identifier (WMI)			Brake System / GVWR / Restraint System	Line, Series, Chassis Type, Cab or Body Type, Vehicle Type			Cylinders, Fuel Type, Mfg. and HP	VIN Check Digit (0-9 or X)	Vehicle Model Year	Plant of Manufacture	Alphanumeric Sequence Vehicle Identifier					
1	2	3	4	5	6	7	8	9	10	11	12	13	14	15	16	17

1    F    ?    ?    E    ?    ?    ?    ?    M    D    ?    ?    ?    ?    ?    ?

**Sequential Vehicle Identifier**  
C00001 - E99999

**Vehicle Assembly Plant**  
Ohio Assembly Plant: Avon Lake, Ohio

**Model Year**  
2021

**Check Digit (Per Part 565.5(c))**

	Displacement (L) / Cyl	Fuel	Mfg	Net Brake H.P.
<b>K</b> =	7.3L	V-8 - Econ	Gasoline	Ford
<b>N</b> =	7.3L	V-8 Prem	Gasoline	Ford

	Make	Line	Series	Chassis Type	Cab/Body	Vehicle Type
<b>E3F</b> =	Ford	Econoline	E-350	SRW / DRW	Cutaway	IV
<b>E3K</b> =	Ford	Econoline	E-350	SRW / DRW	Stripped Chassis	IV
<b>E4F</b> =	Ford	Econoline	E-450	SRW / DRW	Cutaway	IV
<b>E4K</b> =	Ford	Econoline	E-450	SRW / DRW	Stripped Chassis	IV

	Brake System	GVWR		Restraints							
		Class	Range (lbs)	Cat.	Manual Belts	Driver Frontal	Pass. Frontal	Side inflatable			Driver Knee
								1st Row	2nd Row	3rd Row	
W	Hydraulic	3	10,001 - 14,000	3	x	x	x				
X	Hydraulic	4	14,001 - 16,000	3	x	x	x				
3	Hydraulic	3	10,001 - 14,000	8							
4	Hydraulic	4	14,001 - 16,000	8							
E	Hydraulic	3	10,001 - 14,000	2	x	x					
F	Hydraulic	4	14,001 - 16,000	2	x	x					

	Manufacturer	Make	Type
<b>1FC</b> =	Ford Motor Company, USA	Ford	Basic (Stripped) Chassis
<b>1FD</b> =	Ford Motor Company, USA	Ford	Incomplete Vehicle

# 2021 Ford EcoSport

World Manufacturer Identifier (WMI)			Restraint System Category	Make, Car Line, Series, Body Type			Engine Type - Displacement, Cylinders, Fuel Type, Manufacturer, and Horsepower	VIN Check Digit (0-9 or X)	Vehicle Model Year	Plant of Manufacture	Numerical Sequence Vehicle Identifier					
1	2	3	4	5	6	7	8	9	10	11	12	13	14	15	16	17

**M A J ? P 1 ? ? ? ? M C ? ? ? ? ? ? ?**

**Sequential Vehicle Identifier**  
000,000 - 999,999

**Vehicle Assembly Plant**  
C = Chennai, India

**Model Year**  
M = 2021

**Check Digit (Per Part 565.6(c))**

Displacement (L) / Cyl	Fuel	Mfg	Net Brake H.P.
1.0L I-3	Gasoline	Ford	TBD
2.0L I-4	Gasoline	Ford	TBD

Make	Line	Series	Body Type
S2F = Ford	Ecosport	S - FWD	5 DR HATCH
S3F = Ford	Ecosport	S - 4WD	5 DR HATCH
S2G = Ford	Ecosport	SE - FWD	5 DR HATCH
S3G = Ford	Ecosport	SE - 4WD	5 DR HATCH
S3J = Ford	Ecosport	SES - 4WD	5 DR HATCH
S2K = Ford	Ecosport	Titanium - FWD	5 DR HATCH
S3K = Ford	Ecosport	Titanium - 4WD	5 DR HATCH

Brake System	GVWR		Restraint Information								
	Class	Range (lbs)	Manual Belts	Driver Frontal	Pass. Frontal	Side Inflatable			Driver Knee	Pass Knee	Drive Derivative
3 = Hydraulic	Class B	3,001 - 4,000	X	X	X	X	X		X	X	Front Wheel Drive
6 = Hydraulic	Class C	4,001 - 5,000	X	X	X	X	X		X	X	All Wheel Drive

Manufacturer	Type
MAJ = Ford Motor Company, India	MPV

# 2021 Ford Escape

World Manufacturer Identifier (WMI)			Brake System / GVWR / Restraint System	Line, Series, Chassis Type, Cab or Body Type, Vehicle Type	Engine Type - Displ., Cylinders, Fuel Type, Mfg. and HP	VIN Check Digit (0-9 or X)	Vehicle Model Year	Plant of Manufacture	Alphanumeric Sequence Vehicle Identifier							
1	2	3	4	5	6	7	8	9	10	11	12	13	14	15	16	17

1	F	M	C	U	?	?	?	?	M	U	?	?	?	?	?	?
---	---	---	---	---	---	---	---	---	---	---	---	---	---	---	---	---

Sequential Vehicle Identifier  
A00001 thru F99999

Vehicle Assembly Plant  
Louisville, Kentucky

Model Year  
2021

Check Digit (Per Part 565.6(c))

	Displacement (L) / Cyl	Fuel	Mfg	Net Brake H.P.
6 =	1.5L Dragon DI TC Gas	I-3	Gasoline	Ford 181
Z =	2.5L HEV/PHEV	I-4	FHEV/PHEV	Ford 221
9 =	2.0L GTDI 240PS Gas	I-4	Gasoline	Ford 250

	Make	Line	Series	Chassis	Cab/Body	Vehicle Type
U0F =	Ford	Escape	S	4X2	4 - Door	MPV
U0G =	Ford	Escape	SE	4X2	4 - Door	MPV
U0H =	Ford	Escape	SEL	4X2	4 - Door	MPV
U0J =	Ford	Escape	Titanium	4X2	4 - Door	MPV
U0B =	Ford	Escape	SE FHEV	4X2	4 - Door	MPV
U0D =	Ford	Escape	Titanium FHEV	4X2	4 - Door	MPV
U0E =	Ford	Escape	SE PHEV	4X2	4 - Door	MPV
U0K =	Ford	Escape	SEL PHEV	4X2	4 - Door	MPV
U0L =	Ford	Escape	Titanium PHEV	4X2	4 - Door	MPV
U9F =	Ford	Escape	S	4X4	4 - Door	MPV
U9G =	Ford	Escape	SE	4X4	4 - Door	MPV
U9H =	Ford	Escape	SEL	4X4	4 - Door	MPV
U9J =	Ford	Escape	Titanium	4x4	4 - Door	MPV
U9B =	Ford	Escape	SE FHEV	4X4	4 - Door	MPV
U9D =	Ford	Escape	Titanium FHEV	4X4	4 - Door	MPV

Brake System	GVWR Restraint Information								
	Range	Manual Belts	Driver Frontal	Pass. Frontal	Side Inflatable			Driver Knee	Pass. Knee
	4360-4860				1st Row	2nd Row	3rd Row		
C = Hydraulic		X	X	X	X	X		X	

1FM =	Manufacturer Ford Motor Company, USA	Make Ford	Type Multipurpose Passenger Vehicle
-------	---	--------------	--

# 2021 Ford Expedition

Attachment  
January 27, 2020

World Manufacturer Identifier (WMI)			Brake System / GVWR / Restraint System	Line, Series, Chassis Type, Cab or Body Type, Vehicle Type			Engine Type - Displ., Cylinders, Fuel Type, Mfg. and HP	VIN Check Digit (0-9 or X)	Vehicle Model Year	Plant of Manufacture	Alphanumeric Sequence Vehicle Identifier					
1	2	3	4	5	6	7	8	9	10	11	12	13	14	15	16	17
1	F	M	J	?	?	?	T	?	M	E	?	?	?	?	?	?

Sequential Vehicle Identifier  
**A00001-B99999**

Vehicle Assembly Plant  
**E** Kentucky Truck: Jefferson County, Kentucky

Model Year  
**2021**

**M**  
Check Digit (Per Part 565.6(c))

Displacement (L) / Cyl	Fuel	Mfg	Net Brake H.P.
3.5L GTDI	V6	FFV/Gasoline	Ford
			320/310

- U1F
- U1G
- U1H
- U1J
- U1N
- U1P
- U1K
- U2A
- U1L
- U1M
- K1F
- K1G
- K1H
- K1J
- K1N
- K1P
- K1K
- K2A
- K1L
- K1M

Make	Line	Series	Chassis	Cab/Body	Vehicle Type
Ford	Expedition	XL	4X2	4 - Door	MPV
Ford	Expedition	XL	4X4	4 - Door	MPV
Ford	Expedition	XLT	4X2	4 - Door	MPV
Ford	Expedition	XLT	4X4	4 - Door	MPV
Ford	Expedition	King Ranch	4X2	4 - Door	MPV
Ford	Expedition	King Ranch	4X4	4 - Door	MPV
Ford	Expedition	Limited	4x2	4 - Door	MPV
Ford	Expedition	Limited	4x4	4 - Door	MPV
Ford	Expedition	Platinum	4x2	4 - Door	MPV
Ford	Expedition	Platinum	4x4	4 - Door	MPV
Ford	Expedition MAX	XL	4X2	4 - Door	MPV
Ford	Expedition MAX	XL	4X4	4 - Door	MPV
Ford	Expedition MAX	XLT	4X2	4 - Door	MPV
Ford	Expedition MAX	XLT	4X4	4 - Door	MPV
Ford	Expedition MAX	King Ranch	4X2	4 - Door	MPV
Ford	Expedition MAX	King Ranch	4X4	4 - Door	MPV
Ford	Expedition MAX	Limited	4x2	4 - Door	MPV
Ford	Expedition MAX	Limited	4x4	4 - Door	MPV
Ford	Expedition MAX	Platinum	4x2	4 - Door	MPV
Ford	Expedition MAX	Platinum	4x4	4 - Door	MPV

**J**

Brake System	GVWR		Restraints						
	Class	Range (lbs)	Manual Belts	Driver Frontal	Pass. Frontal	Side inflatable			Driver Knee
						1st Row	2nd Row	3rd Row	
Hydraulic	F	7001 - 8000	x	x	x	x	x	x	

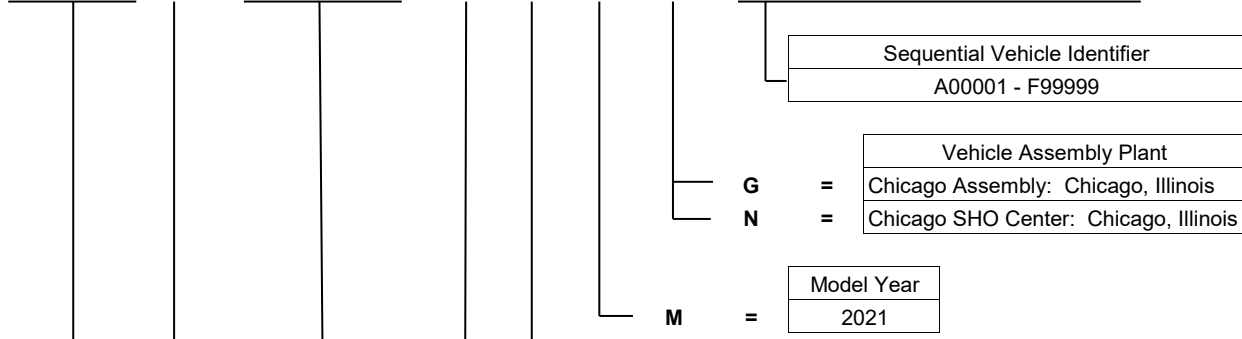
**1FM**

Manufacturer	Make	Type
Ford Motor Company, USA	Ford	Multipurpose Passenger Vehicle

# 2021 Ford Explorer

World Manufacturer Identifier (WMI)			Brake System / GVWR / Restraint System	Line, Series, Chassis Type, Cab or Body Type, Vehicle Type			Engine Type, Cylinders, Fuel Type, Mfg. and HP	VIN Check Digit (0-9 or X)	Vehicle Model Year	Plant of Manufacture	Alphanumeric Sequence Vehicle Identifier					
1	2	3	4	5	6	7	8	9	10	11	12	13	14	15	16	17

1	F	M	?	K	?	?	?	?	M	?	?	?	?	?	?	?
---	---	---	---	---	---	---	---	---	---	---	---	---	---	---	---	---



Sequential Vehicle Identifier  
A00001 - F99999

Vehicle Assembly Plant  
G = Chicago Assembly: Chicago, Illinois  
N = Chicago SHO Center: Chicago, Illinois

Model Year  
2021

**Check Digit** (Per Part 565.6(c))

		Displacement (L) / Cyl	Fuel	Mfg	Net Brake H.P.
B	=	3.3L Ti-VCT V-6	Gasoline	Ford	TBD
H	=	2.3L TiVCT I-4	Gasoline	Ford	300
W	=	3.3L Ti-VCT D4	Hybrid/Electric	Ford	TBD
C	=	3.0L GTDI V-6	Gasoline	Ford	TBD
Y	=	3.0L GTDI D4	PHEV	Ford	TBD

	Make	Line	Series	Chassis Type	Cab/Body	Vehicle Type
K7B	=	Ford	Explorer	Base	RWD	4 - Door MPV
K7D	=	Ford	Explorer	XLT	RWD	4 - Door MPV
K7F	=	Ford	Explorer	Limited	RWD	4 - Door MPV
K8A	=	Ford	Explorer	Police	4WD	4 - Door MPV
K8B	=	Ford	Explorer	Base	4WD	4 - Door MPV
K8D	=	Ford	Explorer	XLT	4WD	4 - Door MPV
K8F	=	Ford	Explorer	Limited	4WD	4 - Door MPV
K8G	=	Ford	Explorer	ST	4WD	4 - Door MPV
K8H	=	Ford	Explorer	Platinum	4WD	4 - Door MPV

		GVWR		Restraint Information								
		Class	Range (lbs)	Manual Belts	Driver Frontal	Pass. Frontal	Side Inflatable			Driver Knee	Pass. Knee	
5	=	Hydraulic	E	6001 - 7000	X	X	X	X	X	X	X	X
S	=	Hydraulic	D	5001-6000	X	X	X	X	X	X	X	X

<b>1FM</b>	<b>=</b>	Manufacturer	Make	Type
		Ford Motor Company, USA	Ford	Multipurpose Passenger Vehicle

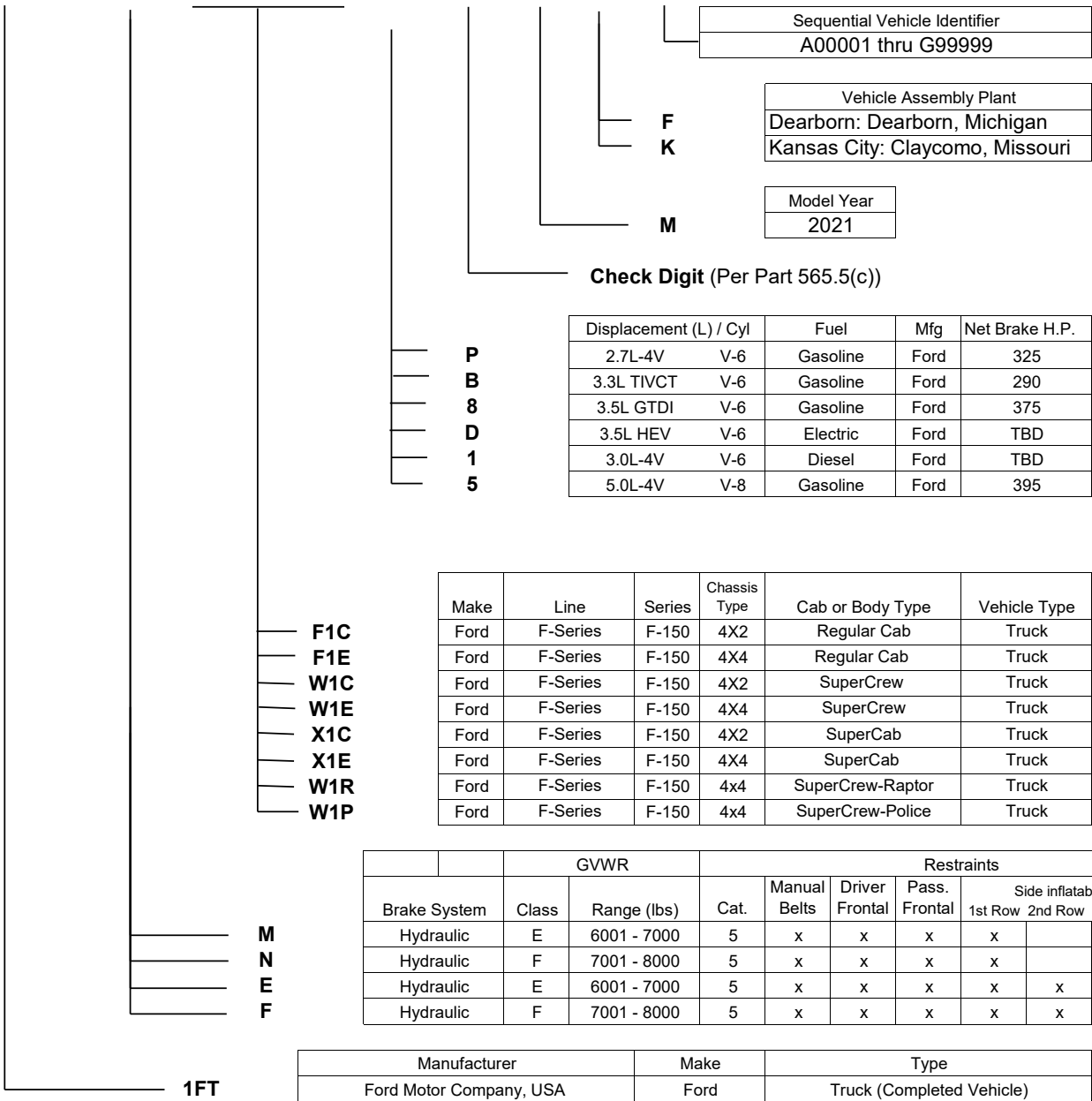


# 2021 Ford F-150

Attachment  
January 24, 2020

World Manufacturer Identifier (WMI)			Brake System / GVWR / Restraint System	Line, Series, Chassis Type, Cab or Body Type, Vehicle Type			Engine Type - Displ., Cylinders, Fuel Type, Mfg. and HP	VIN Check Digit (0-9 or X)	Vehicle Model Year	Plant of Manufacture	Numerical Sequence Vehicle Identifier					
1	2	3	4	5	6	7	8	9	10	11	12	13	14	15	16	17

1	F	T	?	?	1	?	?	?	M	?	?	?	?	?	?	?
---	---	---	---	---	---	---	---	---	---	---	---	---	---	---	---	---



Sequential Vehicle Identifier
A00001 thru G99999

Vehicle Assembly Plant
F Dearborn: Dearborn, Michigan
K Kansas City: Claycomo, Missouri

Model Year
2021

Check Digit (Per Part 565.5(c))

Displacement (L) / Cyl	Fuel	Mfg	Net Brake H.P.
2.7L-4V V-6	Gasoline	Ford	325
3.3L TIVCT V-6	Gasoline	Ford	290
3.5L GTDI V-6	Gasoline	Ford	375
3.5L HEV V-6	Electric	Ford	TBD
3.0L-4V V-6	Diesel	Ford	TBD
5.0L-4V V-8	Gasoline	Ford	395

Make	Line	Series	Chassis Type	Cab or Body Type	Vehicle Type
Ford	F-Series	F-150	4X2	Regular Cab	Truck
Ford	F-Series	F-150	4X4	Regular Cab	Truck
Ford	F-Series	F-150	4X2	SuperCrew	Truck
Ford	F-Series	F-150	4X4	SuperCrew	Truck
Ford	F-Series	F-150	4X2	SuperCab	Truck
Ford	F-Series	F-150	4X4	SuperCab	Truck
Ford	F-Series	F-150	4x4	SuperCrew-Raptor	Truck
Ford	F-Series	F-150	4x4	SuperCrew-Police	Truck

Brake System	GVWR			Restraints						
	Class	Range (lbs)	Cat.	Manual Belts	Driver Frontal	Pass. Frontal	Side inflatable			Driver Knee
Hydraulic	E	6001 - 7000	5	x	x	x	x			
Hydraulic	F	7001 - 8000	5	x	x	x	x			
Hydraulic	E	6001 - 7000	5	x	x	x	x	x		
Hydraulic	F	7001 - 8000	5	x	x	x	x	x		

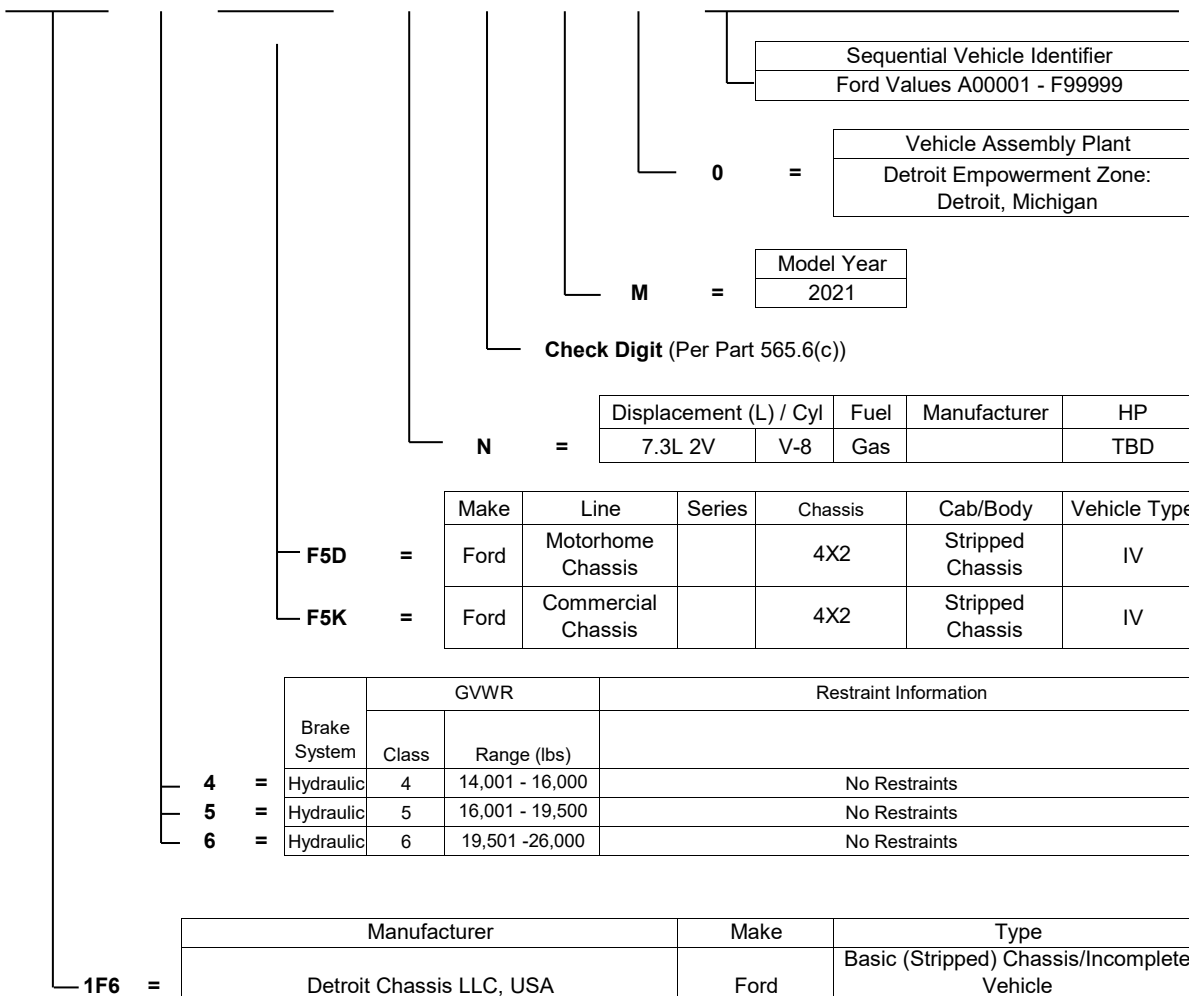
Manufacturer	Make	Type
Ford Motor Company, USA	Ford	Truck (Completed Vehicle)

# 2021 Ford Motorhome-Stripped Chassis

Attachment  
March 20, 2020

World Manufacturer Identifier (WMI)			Brake System / GVWR / Restraint System	Line, Series, Chassis Type, Cab or Body Type, Vehicle Type			Engine Type - Displ., Cylinders, Fuel Type, Mfg. and HP	VIN Check Digit (0-9 or X)	Vehicle Model Year	Plant of Manufacture	Alphanumeric Sequence Vehicle Identifier					
1	2	3	4	5	6	7	8	9	10	11	12	13	14	15	16	17

1	F	6	?	F	5	?	N	?	M	0	?	?	?	?	?	?
---	---	---	---	---	---	---	---	---	---	---	---	---	---	---	---	---

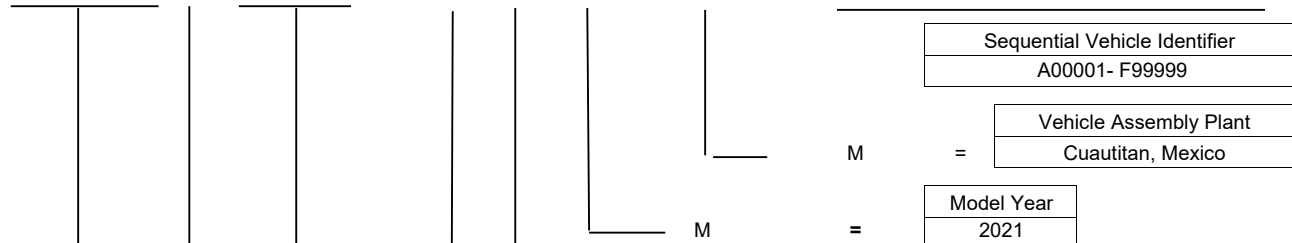


# 2021 Ford Mustang Mach-E

Attachment  
January 24, 2021

World Manufacturer Identifier (WMI)			Restraint System Category	Make, Car Line, Series, Body Type			Engine Type - Displacement, Cylinders, Fuel Type, Manufacturer, and Horsepower	VIN Check Digit (0-9 or X)	Vehicle Model Year	Plant of Manufacture	Numerical Sequence Vehicle Identifier					
1	2	3	4	5	6	7	8	9	10	11	12	13	14	15	16	17

? F ? C ? ? ? ? ? M M ? ? ? ? ? ?



**Check Digit** (Per Part 565.6(c))

	Drive	Fuel	Mfr	Net Hp
M	Standard Range Battery, Rear Primary Drive Unit	Electric	Ford	TBD
7	Extended Range Battery, Rear Primary Drive Unit	Electric	Ford	TBD
S	Standard Range Battery, Rear Primary Drive Unit, Smaller Secondary Drive Unit	Electric	Ford	TBD
U	Extended Range Battery, Rear Primary Drive Unit, Smaller Secondary Drive Unit	Electric	Ford	TBD
X	Extended Range Battery, Rear Primary Drive Unit, Larger Secondary Drive Unit	Electric	Ford	TBD
E	Extended Range Battery, Limited Rear Primary Drive Unit, Limited Larger Secondary Drive Unit	Electric	Ford	TBD

	Make	Line	Series	Chassis	Body Type	Drive
K1R	Ford	Mustang Mach-E	Select	RWD	4-Door	LHD
K1S	Ford	Mustang Mach-E	Select	AWD	4-Door	LHD
K2R	Ford	Mustang Mach-E	California Route 1	RWD	4-Door	LHD
K3R	Ford	Mustang Mach-E	Premium	RWD	4-Door	LHD
K3S	Ford	Mustang Mach-E	Premium	AWD	4-Door	LHD
K4S	Ford	Mustang Mach-E	GT	AWD	4-Door	LHD

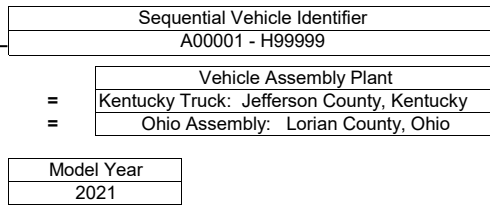
Restraint Information									
Brake System	Range (lb)	Manual Belts	Driver Frontal	Pass. Frontal	Side Inflatable			Driver Knee	Pass Knee
					1st Row	2nd Row	3rd Row		
Hydraulic	6000	X	X	X	X	X		x	x

	Manufacturer	Make	Type
3FM	Ford Motor Company, Mexico	Ford	Multipurpose Passenger Vehicle

# 2021 Ford Super Duty F-250 and F-350

Attachment  
March 20, 2020

World Manufacturer Identifier (WMI)			Brake System / GVWR / Restraint System	Line, Series, Chassis Type, Cab or Body Type, Vehicle Type			Engine Type - Displ., Cylinders, Fuel Type, Mfg.	VIN Check Digit (0-9 or X)	Vehicle Model Year	Plant of Manufacture	Alphanumeric Sequence Vehicle Identifier					
1	2	3	4	5	6	7	8	9	10	11	12	13	14	15	16	17
1	F	?	?	?	?	?	?	?	M	?	?	?	?	?	?	?



**Check Digit (Per Part 565.6(c))**

	Displacement (L) / Cyl	Fuel	Manufacturer	HP	
<b>6</b>	= 6.2L	V-8	Gasoline	Ford	383
<b>N</b>	= 7.3L	V-8	Gasoline	Ford	TBD
<b>T</b>	= 6.7L	V-8	Diesel	Ford	440

	Make	Line	Series	Chassis	Cab or Body Type	Vehicle Type	
F2A	=	Ford	F-Series	F-250	4X2	Regular Cab - SRW	Truck / IV
F2B	=	Ford	F-Series	F-250	4X4	Regular Cab - SRW	Truck / IV
F3A	=	Ford	F-Series	F-350	4X2	Regular Cab - SRW	Truck / IV
F3B	=	Ford	F-Series	F-350	4X4	Regular Cab - SRW	Truck / IV
F3C	=	Ford	F-Series	F-350	4X2	Regular Cab - DRW	Truck / IV
F3D	=	Ford	F-Series	F-350	4X4	Regular Cab - DRW	Truck / IV
F3E	=	Ford	F-Series	F-350	4X2	Regular Cab - SRW	IV
F3F	=	Ford	F-Series	F-350	4X4	Regular Cab - SRW	IV
F3G	=	Ford	F-Series	F-350	4X2	Regular Cab - DRW	IV
F3H	=	Ford	F-Series	F-350	4X4	Regular Cab - DRW	IV
W2A	=	Ford	F-Series	F-250	4X2	Crew Cab - SRW	Truck / IV
W2B	=	Ford	F-Series	F-250	4X4	Crew Cab - SRW	Truck / IV
W3A	=	Ford	F-Series	F-350	4X2	Crew Cab - SRW	Truck / IV
W3B	=	Ford	F-Series	F-350	4X4	Crew Cab - SRW	Truck / IV
W3C	=	Ford	F-Series	F-350	4X2	Crew Cab - DRW	Truck / IV
W3D	=	Ford	F-Series	F-350	4X4	Crew Cab - DRW	Truck / IV
W3E	=	Ford	F-Series	F-350	4X2	Crew Cab - SRW	IV
W3F	=	Ford	F-Series	F-350	4X4	Crew Cab - SRW	IV
W3G	=	Ford	F-Series	F-350	4X2	Crew Cab - DRW	IV
W3H	=	Ford	F-Series	F-350	4X4	Crew Cab - DRW	IV
X2A	=	Ford	F-Series	F-250	4X2	SuperCab - SRW	Truck / IV
X2B	=	Ford	F-Series	F-250	4X4	SuperCab - SRW	Truck / IV
X3A	=	Ford	F-Series	F-350	4X2	SuperCab - SRW	Truck / IV
X3B	=	Ford	F-Series	F-350	4X4	SuperCab - SRW	Truck / IV
X3C	=	Ford	F-Series	F-350	4X2	SuperCab - DRW	Truck / IV
X3D	=	Ford	F-Series	F-350	4X4	SuperCab - DRW	Truck / IV
X3E	=	Ford	F-Series	F-350	4X2	SuperCab - SRW	IV
X3F	=	Ford	F-Series	F-350	4X4	SuperCab - SRW	IV
X3G	=	Ford	F-Series	F-350	4X2	SuperCab - DRW	IV
X3H	=	Ford	F-Series	F-350	4X4	SuperCab - DRW	IV

		GVWR		Restraints							
		Class	Range (lbs)	Manual Belts	Driver Frontal	Pass. Frontal	Side inflatable			Driver Knee	Pass Knee
							1st Row	2nd Row	3rd Row		
<b>B</b>	=	Hydraulic	H 9,001-10,000	X	X	X	X				
<b>R</b>	=	Hydraulic	3 10,001-14,000	X	X	X	X				
<b>7</b>	=	Hydraulic	H 9,001-10,000	X	X	X	X	X			
<b>8</b>	=	Hydraulic	3 10,001-14,000	X	X	X	X	X			

<b>1FD</b>	=	Manufacturer	Ford Motor Company, USA	Make	Ford	Type	Incomplete Vehicle
<b>1FT</b>	=	Manufacturer	Ford Motor Company, USA	Make	Ford	Type	Truck

# 2021 Ford SuperDuty F450, F550, F600

Attachment  
March 20, 2020

World Manufacturer Identifier (WMI)			Brake System / GVWR / Restraint System	Line, Series, Chassis Type, Cab or Body Type, Vehicle Type			Engine Type - Displ., Cylinders, Fuel Type, Mfg.	VIN Check Digit (0-9 or X)	Vehicle Model Year	Plant of Manufacture	Alphanumeric Sequence Vehicle Identifier					
1	2	3	4	5	6	7	8	9	10	11	12	13	14	15	16	17
1	F	?	?	?	?	?	?	?	M	?	?	?	?	?	?	?

Sequential Vehicle Identifier  
A00001 - H99999

Vehicle Assembly Plant  
E = Kentucky Truck: Jefferson County, Kentucky  
D = Ohio Assembly: Lorain County, Ohio

Model Year  
M = 2021

**Check Digit (Per Part 565.6(c))**

N	=	Displacement (L) / Cyl	Fuel	Manufacturer	HP
T	=	7.3L	V-8 Gasoline	Ford	430
		6.7L	V-8 Diesel	Ford	440

	Make	Line	Series	Chassis	Cab or Body Type	Vehicle Type
F4C	Ford	F-Series	F-450	4X2	Regular Cab - DRW	Truck / IV
F4D	Ford	F-Series	F-450	4X4	Regular Cab - DRW	Truck / IV
F4G	Ford	F-Series	F-450	4X2	Regular Cab - DRW	IV
F4H	Ford	F-Series	F-450	4X4	Regular Cab - DRW	IV
F5G	Ford	F-Series	F-550	4X2	Regular Cab - DRW	IV
F5H	Ford	F-Series	F-550	4X4	Regular Cab - DRW	IV
W4C	Ford	F-Series	F-450	4X2	Crew Cab - DRW	Truck / IV
W4D	Ford	F-Series	F-450	4X4	Crew Cab - DRW	Truck / IV
W4G	Ford	F-Series	F-450	4X2	Crew Cab - DRW	IV
W4H	Ford	F-Series	F-450	4X4	Crew Cab - DRW	IV
W5G	Ford	F-Series	F-550	4X2	Crew Cab - DRW	IV
W5H	Ford	F-Series	F-550	4X4	Crew Cab - DRW	IV
X4G	Ford	F-Series	F-450	4X2	SuperCab - DRW	IV
X4H	Ford	F-Series	F-450	4X4	SuperCab - DRW	IV
X5G	Ford	F-Series	F-550	4X2	SuperCab - DRW	IV
X5H	Ford	F-Series	F-550	4X4	SuperCab - DRW	IV
F6K	Ford	F-Series	F-600	4X2	Regular Cab - DRW	IV
F6L	Ford	F-Series	F-600	4X4	Regular Cab - DRW	IV

		GVWR		Restraints							
		Class	Range (lbs)	Manual Belts	Driver Frontal	Pass. Frontal	Side inflatable			Driver Knee	Pass Knee
	Brakes						1st Row	2nd Row	3rd Row		
T	Hydraulic	4	14,001-16,000	X	X	X	X				
U	Hydraulic	5	16,001-19,500	X	X	X	X				
8	Hydraulic	3	10,001-14,000	X	X	X	X	X			
9	Hydraulic	4	14,001-16,000	X	X	X	X	X			
0	Hydraulic	5	16,001-19,500	X	X	X	X	X			
F	Hydraulic	6	19,501-26,000	X	X	X	X				

1FD	1FT	Manufacturer	Make	Type
=	=	Ford Motor Company, USA	Ford	Incomplete Vehicle
		Ford Motor Company, USA	Ford	Truck

# 2021 Ford Super Duty F-650 and F750

Attachment  
October 22, 2019

World Manufacturer Identifier (WMI)			Brake System / GVWR / Restraint System	Line, Series, Chassis Type, Cab or Body Type, Vehicle Type			Engine Type - Displ., Cylinders, Fuel Type, Mfg. and HP	VIN Check Digit (0-9 or X)	Vehicle Model Year	Plant of Manufacture	Alphanumeric Sequence Vehicle Identifier					
1	2	3	4	5	6	7	8	9	10	11	12	13	14	15	16	17

1	F	D	?	?	?	?	?	?	M	D	?	?	?	?	?	?
---	---	---	---	---	---	---	---	---	---	---	---	---	---	---	---	---

Sequential Vehicle Identifier  
A00001 thru F99999

Vehicle Assembly Plant  
Ohio Assembly

Model Year  
2021

Check Digit (Per Part 565.6(c))

C	=	Displacement (L) / Cyl	Fuel	Manufacturer	Net HP / Torque
E	=	6.7L	V-8 Diesel	Ford	270/675
X	=	6.7L	V-8 Diesel	Ford	300/700
N	=	6.7L	V-8 Diesel	Ford	330/725
		7.3L	V-8 Gas/Gaseous	Ford	350/468

	Make	Line	Series	Chassis Type	Cab or Body Type	Type
F6A	Ford	F-Super Duty Gas	F-650	DRW 4X2	Reg Cab Straight Frame	IV
F6B	Ford	F-Super Duty Gas	F-650	DRW 4X2	Reg Cab Kick-up Frame	IV
F6C	Ford	F-Super Duty Gas	F-650	DRW 4X2	Reg Cab Straight Frame	IV
F6D	Ford	F-Super Duty Diesel	F-650	DRW 4X2	Reg Cab Straight Frame	IV
F6E	Ford	F-Super Duty Diesel	F-650	DRW 4X2	Reg Cab Kick-up Frame	IV
F6T	Ford	F-Super Duty Diesel	F-650	DRW 4X2	Reg Cab Tractor	IV
F7A	Ford	F-Super Duty Gas	F-750	DRW 4X2	Reg Cab Straight Frame	IV
F7D	Ford	F-Super Duty Diesel	F-750	DRW 4X2	Reg Cab Straight Frame	IV
F7T	Ford	F-Super Duty Diesel	F-750	DRW 4X2	Reg Cab Tractor	IV
W6A	Ford	F-Super Duty Gas	F-650	DRW 4X2	Crew Cab Straight Frame	IV
W6B	Ford	F-Super Duty Gas	F-650	DRW 4X2	Crew Cab Kick-up Frame	IV
W6D	Ford	F-Super Duty Diesel	F-650	DRW 4X2	Crew Cab Straight Frame	IV
W6E	Ford	F-Super Duty Diesel	F-650	DRW 4X2	Crew Cab Kick-up Frame	IV
W6T	Ford	F-Super Duty Diesel	F-650	DRW 4X2	Crew Cab Tractor	IV
W7A	Ford	F-Super Duty Gas	F-750	DRW 4X2	Crew Cab Straight Frame	IV
W7D	Ford	F-Super Duty Diesel	F-750	DRW 4X2	Crew Cab Straight Frame	IV
W7T	Ford	F-Super Duty Diesel	F-750	DRW 4X2	Crew Cab Tractor	IV
X6A	Ford	F-Super Duty Gas	F-650	DRW 4X2	Super Cab Straight Frame	IV
X6B	Ford	F-Super Duty Gas	F-650	DRW 4X2	Super Cab Kick-up Frame	IV
X6D	Ford	F-Super Duty Diesel	F-650	DRW 4X2	Super Cab Straight Frame	IV
X6E	Ford	F-Super Duty Diesel	F-650	DRW 4X2	Super Cab Kick-up Frame	IV
X6T	Ford	F-Super Duty Diesel	F-650	DRW 4X2	Super Cab Tractor	IV
X7A	Ford	F-Super Duty Gas	F-750	DRW 4X2	Super Cab Straight Frame	IV
X7D	Ford	F-Super Duty Diesel	F-750	DRW 4X2	Super Cab Straight Frame	IV
X7T	Ford	F-Super Duty Diesel	F-750	DRW 4X2	Super Cab Tractor	IV

Brake System	GVWR			Restraint Information						
	Class	Range (lbs)	Cat.	Manual Belts	Driver Frontal	Pass. Frontal	Side Inflatable			Driver Knee
							1st Row	2nd Row	3rd Row	
N	Hydraulic	6	19,501 - 26,000	1	x					
P	Hydraulic	7	26,001 - 33,000	1	x					
W	Air	6	19,501 - 26,000	1	x					
X	Air	7	26,001 - 33,000	1	x					
Y	Air	8	33,001 - 55,000	1	x					

1FD	=	Manufacturer Ford Motor Company	Make Ford	Type Incomplete Vehicle
-----	---	------------------------------------	--------------	----------------------------

# 2021 Ford Transit Connect

World Manufacturer Identifier (WMI)			Brake System / GVWR / Restraint System Category		Make, Line, Series, Chassis Type, Cab or Body Type, Vehicle Type		Engine Type - Displacement, Cylinders, Fuel Type Manufacturer and Horsepower		VIN Check Digit (0-9 or X)	Vehicle Model Year	Plant of Manufacture	Alphanumeric Sequence Vehicle Identifier				
1	2	3	4	5	6	7	8	9	10	11	12	13	14	15	16	17

? ? ? ? ? ? ? ? ? ? ? ? ? ? ? ?

Sequential Vehicle Identifier  
**000,000-999,999**

Vehicle Assembly Plant  
Valencia

Model Year  
2021

Check Digit (Per Part 565.5(c))

Displacement (L) / Cyl		Fuel	Mfg	Net Brake H.P.
2.5L DOHC PFI	I4	Gasoline	Ford	169
2.0L GDI	I4	Gasoline	Ford	150

Make	Line	Series	Chassis Type	Cab/Body	Vehicle Type
Ford	Transit Connect	XL	Short Wheelbase	Van	
Ford	Transit Connect	XL	Long Wheelbase	Van	
Ford	Transit Connect	XL	Long Wheelbase	Van	Canada Only
Ford	Transit Connect	XL	Long Wheelbase	Van	U.S. Postal Van
Ford	Transit Connect	XLT	Short Wheelbase	Van	
Ford	Transit Connect	XLT	Long Wheelbase	Van	
Ford	Transit Connect	XLT	Long Wheelbase	Van	Canada Only
Ford	Transit Connect	XL	Short Wheelbase	Van	
Ford	Transit Connect	XL	Long Wheelbase	Van	
Ford	Transit Connect	XL	Long Wheelbase	Van	Canada Only
Ford	Transit Connect	XLT	Short Wheelbase	Van	
Ford	Transit Connect	XLT	Long Wheelbase	Van	
Ford	Transit Connect	XLT	Long Wheelbase	Van	Canada Only
Ford	Transit Connect	XL	Long Wheelbase	Wagon	
Ford	Transit Connect	XLT	Long Wheelbase	Wagon	
Ford	Transit Connect	XL	Long Wheelbase	Wagon	
Ford	Transit Connect	XL	Long Wheelbase	Wagon	
Ford	Transit Connect	Titanium	Long Wheelbase	Wagon	
Ford	Transit Connect	XL	Long Wheelbase	Van	Canada Only
Ford	Transit Connect	XLT	Long Wheelbase	Van	Canada Only
Ford	Transit Connect	XL	Long Wheelbase	Van	Canada Only
Ford	Transit Connect	XLT	Long Wheelbase	Van	Canada Only

Brake System	GVWR			Restraint Information						
	Class	Range (lbs)	Cat.	Manual Belts	Driver Frontal	Pass. Frontal	Side Inflatables			Driver Knee
							1st row	2nd row	3rd row	
L	Hydraulic	D	5,001-6,000	4	x	x	x	x		
D	Hydraulic	D	5,001-6,000	4	x	x	x	x		
G	Hydraulic	D	5,001-6,000	4	x	x	x	x	x	
8	Hydraulic	D	5,001-6,000	4	x	x	x	x		

<b>NM0</b>	Manufacturer Ford Motor Company of Europe	Type Truck
------------	--	---------------

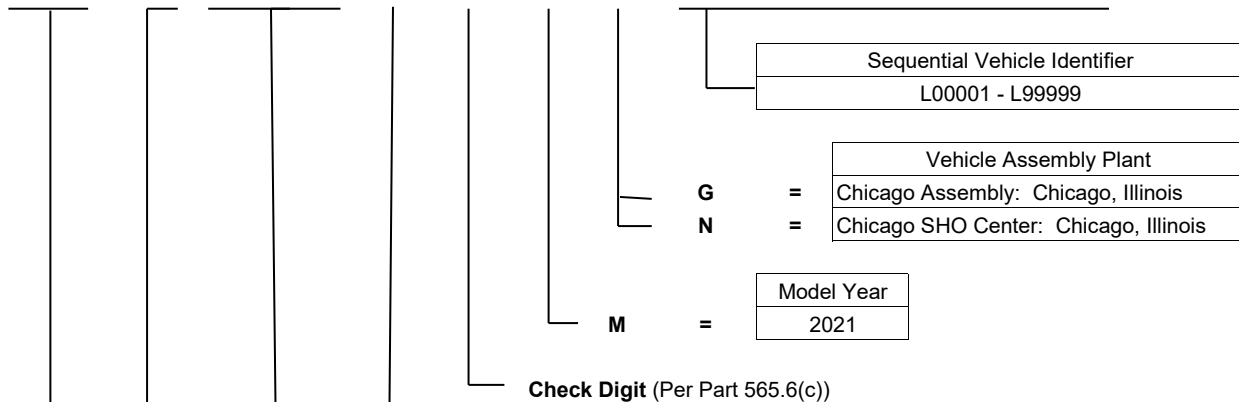
Page 22 of 25

# 2021 Lincoln Aviator

Attachment  
January 27, 2020

World Manufactur er Identifier (WMI)	Brake System / GVWR / Restraint System			Line, Series, Chassis Type, Cab or Body Type, Vehicle Type	Engine Type - Displ., Cylinders, Fuel Type, Mfg. and HP	VIN Check Digit (0-9 or X)	Vehicle Model Year	Plant of Manufacture	Alphanumeric Sequence Vehicle Identifier							
1	2	3	4	5	6	7	8	9	10	11	12	13	14	15	16	17

5	L	M	?	J	?	?	?	?	M	?	?	?	?	?	?	?
---	---	---	---	---	---	---	---	---	---	---	---	---	---	---	---	---



<b>C</b>	=	Displacement (L) / Cyl	Fuel	Mfg	Net Brake H.P.					
Y	=	3.0L GTDI	V-6	Gasoline	Ford	400				
	=	3.0L GTDI	D4	PHEV	Ford	494				

	Make	Line	Series	Chassis Type	Cab/Body	Vehicle Type
<b>J6W</b>	=	Lincoln	Aviator	Base	RWD	4 - Door MPV
<b>J6X</b>	=	Lincoln	Aviator	Base	AWD	4 - Door MPV
<b>J7W</b>	=	Lincoln	Aviator	Reserve	RWD	4 - Door MPV
<b>J7X</b>	=	Lincoln	Aviator	Reserve	AWD	4 - Door MPV
<b>J8X</b>	=	Lincoln	Aviator	Grand Touring	AWD	4 - Door MPV
<b>J9X</b>	=	Lincoln	Aviator	Black Label	AWD	4 - Door MPV
<b>J9Y</b>	=	Lincoln	Aviator	Blk Label Grand Touring	AWD	4 - Door MPV

	Brake System	GVWR		Restraint Information								
		Class	Range (lbs)	Manual Belts	Driver Frontal	Pass. Frontal	Side Inflatable			Driver Knee	Pass. Knee	
							1st Row	2nd Row	3rd Row			
<b>5</b>	=	Hydraulic	E	6001 - 7000	X	X	X	X	X	X	X	X
<b>Y</b>	=	Hydraulic	F	7001 - 8000	X	X	X	X	X	X	X	X

		Manufacturer	Make	Type
<b>5LM</b>	=	Ford Motor Company, USA	Lincoln	Multipurpose Passenger Vehicle



# 2021 Lincoln Corsair

Attachment  
October 22, 2019

World Manufacturer Identifier (WMI)			Brake System / GVWR / Restraint System	Line, Series, Chassis Type, Cab or Body Type, Vehicle Type			Engine Type - Displ., Cylinders, Fuel Type, Mfg. and HP	VIN Check Digit (0-9 or X)	Vehicle Model Year	Plant of Manufacture	Alphanumeric Sequence Vehicle Identifier					
1	2	3	4	5	6	7	8	9	10	11	12	13	14	15	16	17

5	L	M	?	J	?	?	?	?	M	U	?	?	?	?	?	?
---	---	---	---	---	---	---	---	---	---	---	---	---	---	---	---	---

**U** = Sequential Vehicle Identifier  
L00001 - L99999

**U** = Vehicle Assembly Plant  
Louisville, Kentucky

**M** = Model Year  
2021

Check Digit (Per Part 565.6(c))

	Displacement (L) / Cyl	Fuel	Mfg	Net Brake H.P.
<b>H</b> =	2.3L GTDI	Gasoline	Lincoln	275
<b>9</b> =	2.0L GTDI	Gasoline	Lincoln	237
<b>Z</b> =	2.5L IVCT	PHEV	Lincoln	TBD

	Make	Line	Series	Chassis	Cab/Body	Vehicle Type
<b>J1C</b> =	Lincoln	CORSAIR	Standard	4X2	4 - Door	CUV
<b>J1D</b> =	Lincoln	CORSAIR	Standard	4X4	4 - Door	CUV
<b>J2C</b> =	Lincoln	CORSAIR	Reserve	4X2	4 - Door	CUV
<b>J2D</b> =	Lincoln	CORSAIR	Reserve	4X4	4 - Door	CUV
<b>J5D</b> =	Lincoln	CORSAIR	PHEV	4X4	4 - Door	CUV

Brake System	GVWR				Driver Frontal	Pass. Frontal	Side Inflatable			Driver Knee	Pass. Knee
	Class	Range (lbs)	Manual Belts	Range (lbs)			1st Row	2nd Row	3rd Row		
<b>C</b> =	Hydraulic	C	4,840-5000	X	X	X	X	X		X	
<b>T</b> =	Hydraulic	D	5,001-6,000	X	X	X	X	X		X	

Manufacturer		Make	Type
<b>5LM</b> =		Ford Motor Company	LINCOLN Multipurpose Passenger Vehicle

# 2021 Lincoln Navigator

Attachment  
March 20, 2020

World Manufacturer Identifier (WMI)			Brake System / GVWR / Restraint System	Line, Series, Chassis Type, Cab or Body Type, Vehicle Type			Engine Type - Displ., Cylinders, Fuel Type, Mfg. and HP	VIN Check Digit (0-9 or X)	Vehicle Model Year	Plant of Manufacture	Alphanumeric Sequence Vehicle Identifier					
1	2	3	4	5	6	7	8	9	10	11	12	13	14	15	16	17

5	L	?	J	J	?	?	T	?	M	E	?	?	?	?	?	?
---	---	---	---	---	---	---	---	---	---	---	---	---	---	---	---	---

Sequential Vehicle Identifier  
**L00001-L99999**

Vehicle Assembly Plant  
Kentucky Truck: Jefferson County, Kentucky

Model Year  
2021

Check Digit (Per Part 565.6(c))

T =	Displacement (L) / Cyl	Fuel	Mfg	Net Brake H.P.
	3.5L GTDI	V6	FFV/Gasoline	Ford

	Make	Line	Series	Chassis Type	Cab/Body Type	Vehicle Type
J2M =	Lincoln	Navigator	Standard	4X2	4 - Door	MPV
J2N =	Lincoln	Navigator	Standard	4X4	4 - Door	MPV
J2R =	Lincoln	Navigator	Preferred	4X4	4 - Door	MPV
J2S =	Lincoln	Navigator	Presidential	4X4	4 - Door	MPV
J3S =	Lincoln	Navigator L	Presidential	4X4	4 - Door	MPV
J3M =	Lincoln	Navigator L	Standard	4X2	4 - Door	MPV
J3N =	Lincoln	Navigator L	Standard	4X4	4 - Door	MPV
J2K =	Lincoln	Navigator	Reserve	4x2	4 - Door	MPV
J3K =	Lincoln	Navigator L	Reserve	4x2	4 - Door	MPV
J2L =	Lincoln	Navigator	Reserve	4X4	4 - Door	MPV
J3L =	Lincoln	Navigator L	Reserve	4X4	4 - Door	MPV
J2T =	Lincoln	Navigator	BL	4X4	4 - Door	MPV
J3T =	Lincoln	Navigator L	BL	4X4	4 - Door	MPV

Brake System	GVWR		Restraints						
	Class	Range (lbs)	Manual Belts	Driver Frontal	Pass. Frontal	Side inflatable			Driver Knee
						1st Row	2nd Row	3rd Row	
Hydraulic	F	7001 - 8000	x	x	x	x	x	x	

5LM =	Manufacturer	Make	Type
	Ford Motor Company, USA	Lincoln	Multipurpose passenger Vehicle