



October 31<sup>st</sup> 2016

Administrator,  
National Highway Traffic Safety Administration,  
1200 New Jersey Avenue, SE.,  
Washington, DC 20590,

Attention: VIN Coordinator.

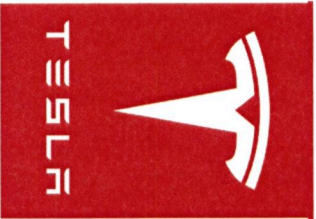
Dear Sir /Madam

Pursuant to § 565.26 Reporting requirements, Tesla Motors Inc. hereby submits the Vehicle Identification number decoder for its upcoming MY2017 line of vehicles. Tesla Motors intends to begin production of MY2017 vehicles beginning January 1<sup>st</sup> 2017.

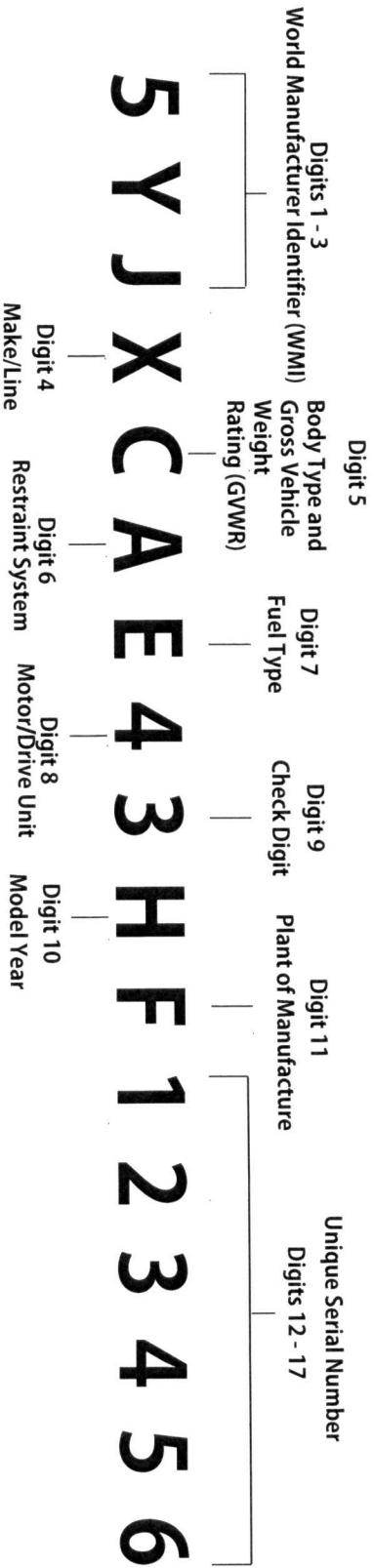
Please contact me directly if you need any additional information.

Kind Regards,

Suraj Nagaraj  
Director, Vehicle Homologation  
Tesla Motors Inc.  
510-249-8749  
[snagaraj@teslamotors.com](mailto:snagaraj@teslamotors.com)

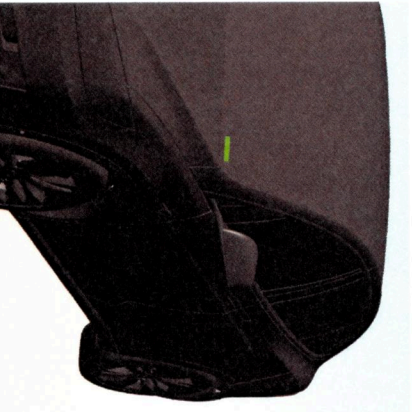


# 2017 MODEL X VIN DECODER



## VIN Locations

Driver's windshield bottom corner



Driver's side lower B-Pillar



---

**Digits 1 - 3: World Manufacturing Identifier**

5YJ = Manufacturer: Tesla Motors Inc.

**Digit 4: Make/Line/Series**

X = Tesla Model X

**Digit 5: Body Type and Gross Vehicle Weight Rating (GVWR)**

C = Class E (6001-7000 lbs) GVWR / MPV / 5 Dr / LHD

**Digit 6: Restraint System**

A = Type 2 manual seatbelts (FR, SR\*3, TR\*2) with front airbags, PODS, side inflatable restraints, knee airbags (FR)  
B = Type 2 manual seatbelts (FR, SR\*2, TR\*2) with front airbags, PODS, side inflatable restraints, knee airbags (FR)  
D = Type 2 manual seatbelts (FR, SR\*3) with front airbags, PODS, side inflatable restraints, knee airbags (FR)

**Digit 7: Fuel Type**

E = Electric

**Digit 8: Motor/Drive Unit**

2 = Dual Motor (standard)

4 = Dual Motor (performance)

**Digit 9: Check Digit**

To be assigned by manufacturer pursuant to 49 CFR § 565.6(c)

**Digit 10: Model Year**

H = 2017

**Digit 11: Plant of Manufacture**

F = Fremont, CA

**Digits 12-17: Unique serial number**