



October 31st 2016

Administrator,
National Highway Traffic Safety Administration,
1200 New Jersey Avenue, SE.,
Washington, DC 20590,

Attention: VIN Coordinator.

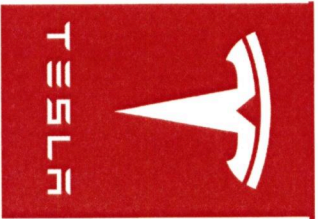
Dear Sir /Madam

Pursuant to § 565.26 Reporting requirements, Tesla Motors Inc. hereby submits the Vehicle Identification number decoder for its upcoming MY2017 line of vehicles. Tesla Motors intends to begin production of MY2017 vehicles beginning January 1st 2017.

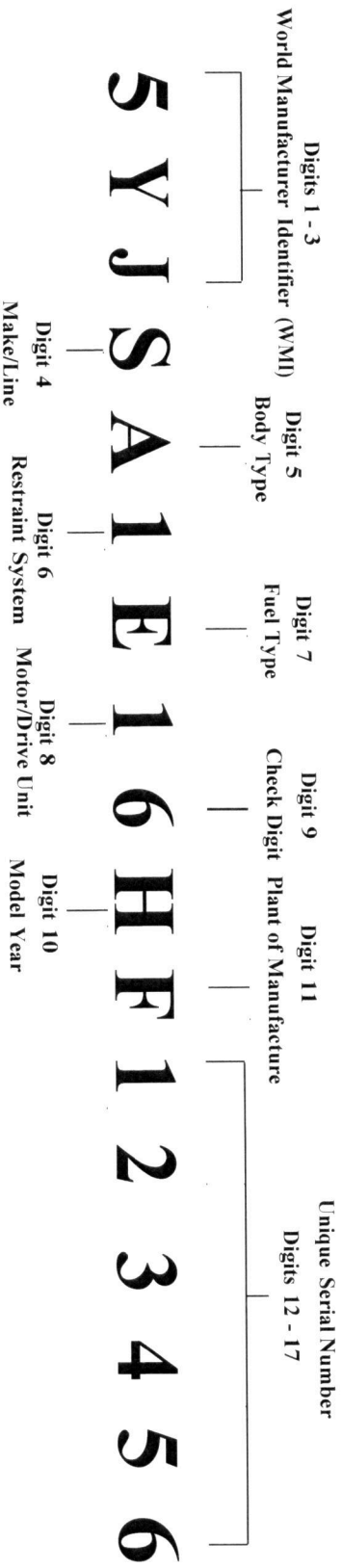
Please contact me directly if you need any additional information.

Kind Regards,

Suraj Nagaraj
Director, Vehicle Homologation
Tesla Motors Inc.
510-249-8749
snagaraj@teslamotors.com



2017 MODEL S VIN DECODER



VIN Locations

Driver's windshield bottom corner



Driver's side lower B-Pillar



Digits 1 - 3: World Manufacturing Identifier

5YJ = Manufacturer: Tesla Motors Inc.

Digit 4: Make/Line/Series

S = Tesla Model S

Digit 5: Body Type

A = Hatchback 5 Dr / LHD

B = Hatchback 5 Dr / RHD

Digit 6: Restraint System

1 = Type 2 Manual seatbelts (FR, SR*3) with front Airbags, PODS, side Inflatable restraints, Knee Airbags (FR)

4 = Type 2 Manual seatbelts (FR, SR*3) with front Airbags, side Inflatable restraints, Knee Airbags (FR)

Digit 7: Fuel type

E = Electric

Digit 8: Motor/Drive Unit

1 = Single Motor - Standard

3 = Single Motor - Performance

2 = Dual Motor - Standard

4 = Dual Motor - Performance

Digit 9: Check Digit

To be assigned by manufacturer pursuant to 49 CFR § 565.6(c)

Digit 10: Model Year

H = 2017

Digit 11: Plant of Manufacture

F = Fremont, CA

Digits 12-17:

Unique Serial Number